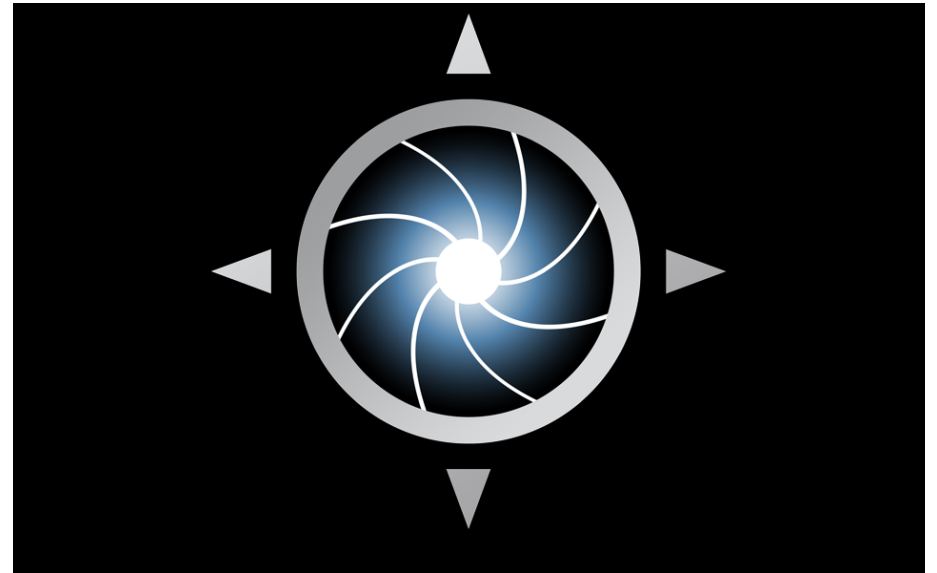


# GE Security Video Software

## GE Nav v 3.0

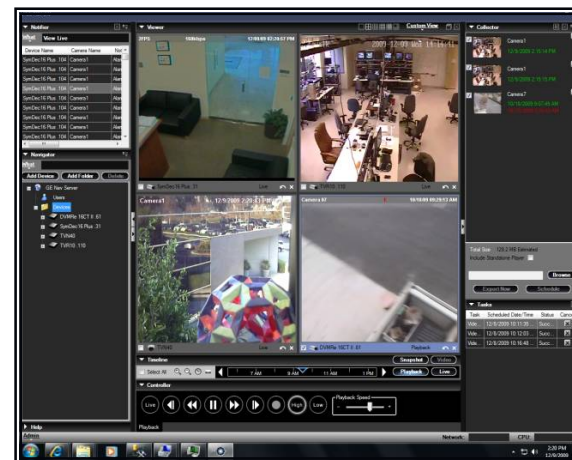
### DVR Management Software

Supports TVR- 10, NVR40,  
DVMRe, StoreSafe,  
SymDec and SymSafe Pro  
digital recorders



# GE Nav v3.0

- License free DVR and NVR Manager
- Same great UI as GE Nav v2
- Support for TruVision DVR 10 and TruVision NVR 40
- Improved device and address book management
- Ability to enable NTP Service on the GE Nav Server
- Improved Player



Ability to manage an Analog or IP system by the same powerful, license free application

# GE Nav — Standard Features

- ✓ Backward capability allows GE Nav to manage DVMRe and StoreSafe lines as well as TVR-10, NVR 40, SymDec and SymSafe Pro DVRs so that your investment in legacy equipment can be leveraged
- ✓ Wide scalability ranging from enterprise IT environments to stand-alone systems accommodates future growth needs
- ✓ Remote client software distribution alleviates the need to physically ship media
- ✓ Centralised remote user/group management facilitates system scale and control, reducing workload and security risk
- ✓ Health Diagnostics function automatically polls DVRs for health data to maintain consistent system uptime

# GE Nav — Standard Features

- ✓ Multiple alert notifications generated by DVRs are collected and presented to aid in proper tracking and quick resolution
- ✓ Remote DVR configuration and firmware uploads reduce administration time and costly site visits
- ✓ Scheduled video exports from DVRs enables video transfers to occur during low bandwidth hours freeing up network capacity during high demand periods
- ✓ Multi-site feature enables the display of videos from multiple cameras and DVRs simultaneously, allowing for seamless integration of both legacy and Sym-DVRs in a single video display
- ✓ Custom view delivers unlimited, custom-configured views ensuring the right video is viewed at the right time

**Notifier**

What: Live

| Device Name        | Alert Type | Time           |
|--------------------|------------|----------------|
| Site 60\Front D... | Motion     | 8/19/08 1:30am |
| Site 41            | Video Loss | 8/19/08 5:45am |

**Navigator**

What: All Cameras  
 With: Video Loss  
 When: Today

Favorites: **Show** Hide Folders

**Server**

- California
  - Orange County
    - Site 41
      - Computer Lab
      - Outside SE
      - Break Room
      - Front Desk
      - Parking Lot (Secti...
    - Los Angeles
    - Inland Empire

**Help**

GE Nav v2.0

© 1998-2008. All Rights Reserved  
 SymNav and the GE Nav logos are trademarks of  
 GE Security.

**Viewer** Custom View

Computer Lab Live

Front Desk Recorded - Playing

Outside SE Live

Parking Lot (Section A) Live

**Timeline** Snapshot Video View

Select All [Icons] 4 | 5 | 6 | 7 | 8 | 9 | 10 | 11

**Controller**

Live [Play/Pause/Stop/Record/High] [Buttons]

Playback PTZ

**Collector**

- Office Camera... 8/05/2008 12:03pm Local Record...
- Outside SE 8/05/2008 12:05pm 8/05/2008 2:30pm

Total Size: 1,108Mb

Include Standalone Player

Destination:  Browse

Export Now Schedule

**Tasks**

| Task           | Scheduled Time |     |
|----------------|----------------|-----|
| Firmware Up... | 8/19/08 1:30am | Com |
| Video Export   | 8/19/08 5:45am | Pen |

# Key Functions

- ✓ **Notifier** – Allows you to collect and manage any alerts sent to you from the various security devices
- ✓ **Navigator** – Provides access to all DVRs and cameras in a system, with a user-friendly What-With-When filter to pinpoint specific video objects with minimal clicks
- ✓ **Help** – Offers detailed system instructions as well as information on GE Nav versions
- ✓ **Viewer** – Operators can view live and recorded video selected from the Notifier, Navigator or Collector
- ✓ **Timeline** – Allows users to seek and play video at any point along a pre-selected time interval

# Key Functions

- ✓ **Controller** – Allows the user to view or edit the properties of currently selected objects in the Navigator
- ✓ **Collector** – Acts as a holding repository for video segments, snapshots, and local recordings ready for export
- ✓ **Tasks** – Provides one central place to monitor the progress of the tasks created in the system, such as video exports, firmware upgrades and bulk DVR configurations

# Training Videos

GE Nav v2 has 9 training videos for self paced learning:

1. Product overview
2. Installation procedure
3. Adding a DVR to the Navigator, loading an address book, organising the Navigator tree
4. Managing video, controlling a PTZ
5. Configuring a DVR, disk analysis, camera searches
6. Server configuration, permission control, help system
7. Managing users and user groups, client installation
8. Searches in the Navigator and Notifier
9. Bulk firmware upgrades and DVR configuration
10. GE Nav Technical Training TVN 40