

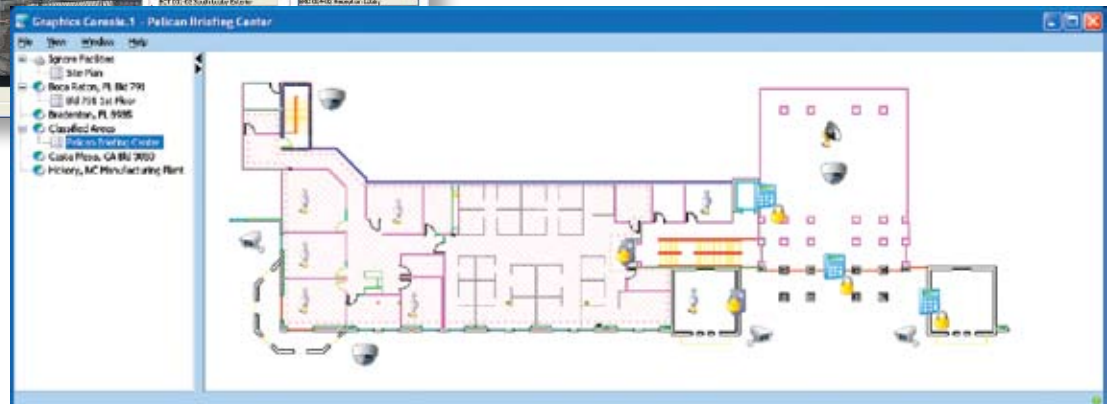
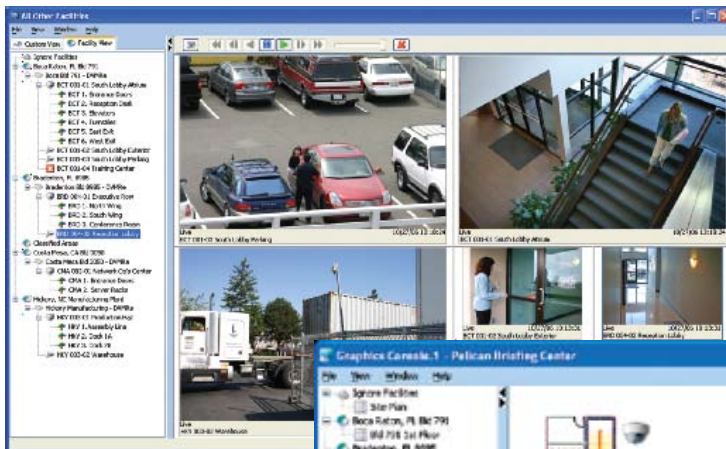
Facility Commander® Wnx

The most powerful integrated security system upgrade for your Secure Perfect® access control system!

- Complete end-to-end management of access control, alarm monitoring, digital video surveillance and photo ID credentialing in a fully integrated monitoring and command-and-control package
- Enhanced Microsoft® XP look and feel with greater multi-window application management for more real-time information on the desktop
- Single interface for all applications, easy point-and-click mouse-driven navigation with more video management and graphics command and control capability at your fingertips
- Integrates with the latest GE DVRs, as well as a host of third-party DVRs
- Versions available that are optimized for range of needs from small business to global enterprise—more scalability than has ever before been available



A fully integrated monitoring and command-and-control security platform



Why Upgrade?	from Secure Perfect®	to Facility Commander® Wnx
GUI Usability		
Look and feel	Windows® 2000 / Menu application lists	Windows XP / Office application groups
Desktop application window management	Multi-application admin and monitoring, single-window desktop	Multi-application admin & monitoring, multi-window, multi-monitor desktop
Integrated Digital Video Surveillance*		
Video driver support	<ul style="list-style-type: none"> • GE DVMRe CD, CT, CT-II Series • GE StoreSafe Pro, Pro-II Series 	<ul style="list-style-type: none"> • GE SymDec™ and SymSafe™ Series DVRs • GE Legend™ IP PTZ dome • GE SymNet-1 encoder • GE UltraView™ EVP (formerly VisioWave™ IVP) • GE DVMRe CD, CT, CT-II Series • GE StoreSafe™ Pro, Pro-II Series • Integral Technologies DVXi, DSXpress • Pelco DX8000 • Panasonic HD500 • NiceVision Pro and Harmony • American Dynamics Intellex • Digital Watchdog DW Pro
Video Device Tree Navigation with camera drag and drop	No	Yes
User definable, multi-camera custom views	No	Unlimited
Multi-camera video management and viewing	Multi 1-UPs only	Multi 1-UP, 2-UP, 4-UP, 9-UP, 16-UP, Custom 7-UP, Custom 11-UP, Custom Center/Perimeter
Quick-recall video playback on any camera view	No	Easy right-mouse-click navigation: Last 15sec, 30sec, 1min, 2min, 5min or last 3 events
Auto pop-up live video view on alarm	Multi 1-Ups only	Configurable for multi-camera views in single window replace or multi-window continuous
Create and save video clips to file	From playback of single recorded stream at a time	From playback of multi-recorded and live video streams simultaneously
Graphics Monitoring and Control		
Graphics Map Preferences Editor	No	Yes
Multi-layer CAD import, create, edit, viewing	No	Yes
Map import file formats	.WMF, .EMF	.JPG, .GIF, .PNG and AutoCAD .DXF R12
Full design tool palette with drawing, image import, text, and hyperlink control of DB device objects	No	Yes
Device symbol editor and library for quick drag-and-drop icons, precision placement with nudge	No, Limited	Yes
Dynamic multi-state device symbols	Static symbol tri-state (Alarm, Reset, Trouble)	Dynamic multi-state, all states user-configurable per device symbol
Device symbol import file formats	.ICO	.JPG, .GIF, Animated .GIF, .PNG
Multi-map navigation management and viewing	Single-window, multi-map drill down, single-layer view at a time	Multi-window, multi-map drill down, multi-layer view
Map navigation tree hierarchy by facility with real-time status	No	Yes
Real-time device status for alarm and non-alarm conditions	Alarm states only	All alarm, event, and conditional states simultaneously
Device command and control	Limited to Door lock/unlock, Alarm monitor On/Off, live camera call-up	All device-dependent commands with state change confirmation
Fully scalable map views and icons with zoom control	Non-scalable	Yes

External Integration Capability	from Secure Perfect®	to Facility Commander® Wnx
API for Device Command and Control, Status, and External Alarm Processing	Yes, Limited	Yes, Extended
Customizable web-based report server	Limited, Report Commander	Crystal Reports Server 2008 Support

NEW v7.5 Application Features

Automatic credential deactivation based on duration of inactivity policy	No	Yes
Threat Level Access – change hierarchy of personnel access per controller(s), manual operation or via global event triggers from controller(s) alarm input(s)	No	Yes
Alarm Category – user-definable classification of alarm records for augmenting alarm monitor assessment	No	Yes
Alarm Lock Down – Change PXNplus-based controller(s) operational mode based on local alarm input(s) via global event triggers	No	Yes
Local Keypad Extended Unlock/Shunt – PXNplus controller supported reader keypad extended unlock command with local shunt and pre-alarm annunciation	No	Yes
New External Reports – “Who Has Access” and “Reader Where When” report for easy auditing	No	Yes

NLS Language Packs

Arabic	Yes	Yes
Dutch	Yes	Yes
French	Yes	Yes
Italian	Yes	Yes
Japanese	Yes	Yes
Korean	Yes	Yes
Portugese	Yes	Yes
Russian	Yes	Yes
Simplified Chinese	Yes	Yes
Spanish	Yes	Yes
Traditional Chinese	Yes	Yes
Turkish	No	Yes

Operating System and Database

Windows® Vista support	No	Yes
Windows Server 2008	No	Yes
SQL Server 2008 Express	No	Yes
SQL Server 2008, local or remote DB inst.	No	Yes
SQL Server Cluster, remote DB inst.	Yes	Yes
32 and 64 Bit Server environment support	No	Yes

*Consult Facility Commander Wnx video driver matrix for specific models, versions and supported features.

GE Security

North America
T 888-GE-SECURITY
888-437-3287

Asia
T 852-2907-8108
F 852-2142-5063

Australia
T 61-3-9239-1200
F 61-3-9239-1299

Canada
T 800-267-6317
F 613-737-5517

Europe
T 32-2-725-11-20
F 32-2-721-40-47

Latin America
T 305-593-4301
F 305-593-4300

gesecurity.com

Specifications subject to change without notice.

© 2009 General Electric
Company

All Rights Reserved

ISO 9001:2000-Certified Processes



imagination at work